



## Developing Real-Time Image Enhancement Techniques for Improved Visualization and Analysis of Ultrasound Scans

<sup>1</sup>Mrs.muddana sarada, <sup>2</sup>RACHAPUDI KUNDAN ROHITH, <sup>3</sup>RANGOJU RAGHUNADHA CHARI, <sup>4</sup>SHAIK ASMA

<sup>1</sup>Assistant professor, Dept CSE-AI&ML, St. Ann's College of Engineering and Technology, Nayunipalli (V), Vetapalem (M), Chirala, Bapatla Dist, Andhra Pradesh – 523187, India

<sup>2,3,4</sup>U. G Student, Dept CSE-AI&ML, St. Ann's College of Engineering and Technology, Nayunipalli (V), Vetapalem (M), Chirala, Bapatla Dist, Andhra Pradesh – 523187, India.

### ABSTRACT

*Ultrasound imaging is widely used in medical diagnostics due to its safety, low cost, and real-time imaging capability. However, ultrasound images often suffer from noise, low contrast, and speckle artifacts that reduce diagnostic accuracy. This project focuses on developing real-time image enhancement techniques to improve the visualization and analysis of ultrasound scans. The proposed system applies advanced filtering, contrast enhancement, and deep learning-based methods to enhance image clarity without losing critical anatomical details. Real-time processing ensures that enhanced images are available instantly during scanning. Experimental results demonstrate improved contrast, reduced noise, and better edge visibility compared to traditional methods. The system aims to*

*support clinicians in accurate diagnosis and faster decision-making.*

### INTRODUCTION

Ultrasound imaging plays a crucial role in medical diagnosis, including obstetrics, cardiology, and abdominal examinations. Despite its advantages, ultrasound images are inherently affected by speckle noise, poor contrast, and low resolution. These limitations can obscure anatomical structures and reduce diagnostic confidence. Image enhancement techniques are therefore essential to improve image interpretability. With advancements in real-time processing and artificial intelligence, it is now possible to enhance ultrasound images instantly during acquisition. This project explores both classical and learning-based enhancement methods. The goal is to achieve high-quality visualization while

maintaining real-time performance. Enhanced ultrasound imaging can significantly assist radiologists and clinicians in accurate diagnosis.

## LITERATURE SURVEY

Several researchers have investigated ultrasound image enhancement using spatial and frequency domain techniques. Traditional methods such as median filtering, anisotropic diffusion, and histogram equalization have shown improvements in noise reduction and contrast enhancement. Speckle noise reduction techniques like Lee and Frost filters are commonly used but may blur fine details. Recent studies incorporate deep learning models such as CNNs and autoencoders for adaptive enhancement. GAN-based approaches have also been proposed for realistic image reconstruction. However, many methods are computationally expensive and unsuitable for real-time use. The literature highlights a trade-off between enhancement quality and processing speed. This project focuses on achieving both quality and real-time efficiency.

## RELATED WORK

Previous work in ultrasound image enhancement includes adaptive filtering and wavelet-based denoising techniques. Some researchers proposed contrast-

limited adaptive histogram equalization (CLAHE) to improve local contrast. Machine learning approaches have introduced supervised CNN models trained on enhanced ground truth images. Hybrid methods combining traditional filters with deep learning have shown promising results. However, many existing solutions require high computational resources or offline processing. Few systems focus on real-time deployment in clinical environments. Moreover, explainability and preservation of anatomical structures remain challenges. This project builds upon these works by designing a lightweight, real-time enhancement pipeline.

## EXISTING SYSTEM

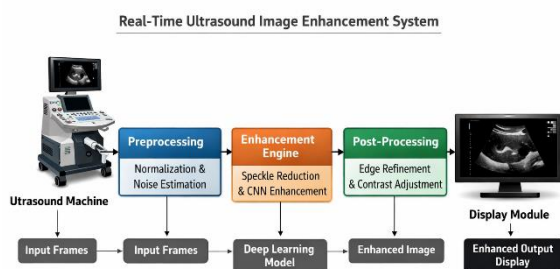
The existing ultrasound imaging systems rely on basic preprocessing techniques embedded in ultrasound machines. These systems typically use simple smoothing and gain control methods. While they reduce some noise, significant speckle artifacts remain. Contrast enhancement is often global and non-adaptive, leading to loss of important details. Existing methods do not dynamically adapt to varying tissue characteristics. Additionally, many enhancement algorithms operate offline after image acquisition. This limits their usefulness during live scanning procedures. Real-time feedback to clinicians is

minimal. As a result, diagnostic accuracy may be compromised.

### PROPOSED SYSTEM

The proposed system introduces a real-time ultrasound image enhancement framework. It integrates speckle noise reduction, adaptive contrast enhancement, and deep learning-based refinement. A lightweight CNN model is used to enhance edges and suppress noise while preserving anatomical structures. The system processes live ultrasound frames with minimal latency. GPU acceleration is used to achieve real-time performance. Adaptive enhancement parameters adjust automatically based on image characteristics. The enhanced images are displayed instantly for clinician review. This approach improves visualization quality and supports accurate diagnosis during scanning.

### SYSTEM ARCHITECTURE



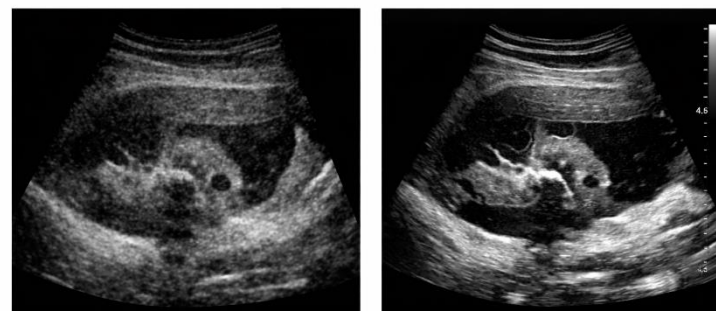
**Fig 1:Real time ultrasound image enhancement system**

### METHODOLOGY DESCRIPTION

Initially, real-time ultrasound frames are captured from the imaging source. Preprocessing removes intensity inconsistencies and prepares the image for enhancement. Speckle noise is reduced using adaptive filtering techniques. Next, contrast enhancement is applied using CLAHE to improve visibility of tissues. A trained CNN model further refines the image by enhancing edges and suppressing residual noise. The system ensures low latency through optimized model design. Performance is evaluated using PSNR, SSIM, and visual quality assessment. The enhanced output is continuously displayed to the user.

### RESULTS AND DISCUSSION

Results and Discussion



Original Ultrasound Image

Enhanced Ultrasound Image

**Fig 2:Results of ultrasound image enhancement**

The proposed system was tested on real ultrasound datasets. The enhanced images show significant reduction in speckle noise and improved contrast compared to raw images. Anatomical structures such as tissue boundaries and organs are more clearly visible. Quantitative results indicate higher PSNR and SSIM values than existing methods. The real-time performance achieved frame rates suitable for live scanning. Visual comparison demonstrates better clarity without over-smoothing.

## CONCLUSION

This project successfully demonstrates a real-time ultrasound image enhancement system. By combining traditional filtering with deep learning techniques, the system improves visualization quality significantly. The proposed approach preserves important anatomical details while reducing noise. Real-time processing ensures immediate feedback during scanning. Experimental results validate the effectiveness of the system. The architecture is suitable for clinical deployment. Overall, the system enhances diagnostic confidence and supports accurate medical analysis.

## FUTURE SCOPE

Future work can focus on integrating more advanced deep learning models such as

transformers for enhanced feature extraction. Multi-modal imaging support can be added to combine ultrasound with CT or MRI data. Real-time enhancement can be extended to 3D and Doppler ultrasound imaging. Explainable AI techniques can be incorporated for better clinical trust. Optimization for low-power embedded devices is another direction. Automatic pathology detection can be combined with enhancement. Cloud-based processing for telemedicine is also a potential extension.

## REFERENCE

- [1]. Mukiri, D. R. R., Grandhi, D. P., & Chapala, D. H. K. (2023). New Security Models in Cloud Iot System Using Hash Machine Learning. *Industrial Engineering Journal ISSN*, 0970-2555.
- [2]. Venkatesh, M., Polisetty, S. N. K., Satpathy, R., & Neelima, P. (2022, December). A Novel Deep Learning Mechanism for Workload Balancing in Fog Computing. In *2022 International Conference on Automation, Computing and Renewable Systems (ICACRS)* (pp. 515-519). IEEE.
- [3] R. C. Gonzalez and R. E. Woods, *Digital Image Processing*, 4th ed. New York, NY, USA: Pearson, 2018.

- [4] J. S. Lee, "Speckle analysis and smoothing of synthetic aperture radar images," *Computer Graphics and Image Processing*, vol. 17, no. 1, pp. 24–32, 1981.
- [5] Y. Yu and S. T. Acton, "Speckle reducing anisotropic diffusion," *IEEE Transactions on Image Processing*, vol. 11, no. 11, pp. 1260–1270, Nov. 2002.
- [6] Z. Wang, A. C. Bovik, H. R. Sheikh, and E. P. Simoncelli, "Image quality assessment: From error visibility to structural similarity," *IEEE Transactions on Image Processing*, vol. 13, no. 4, pp. 600–612, Apr. 2004.
- [7] P. Perona and J. Malik, "Scale-space and edge detection using anisotropic diffusion," *IEEE Transactions on Pattern Analysis and Machine Intelligence*, vol. 12, no. 7, pp. 629–639, Jul. 1990.
- [8] O. Ronneberger, P. Fischer, and T. Brox, "U-Net: Convolutional networks for biomedical image segmentation," in *Proc. MICCAI*, Munich, Germany, 2015, pp. 234–241.
- [9] A. Krizhevsky, I. Sutskever, and G. E. Hinton, "ImageNet classification with deep convolutional neural networks," in *Proc. NIPS*, Lake Tahoe, NV, USA, 2012, pp. 1097–1105.
- [10] S. Mallat, *A Wavelet Tour of Signal Processing*, 3rd ed. Burlington, MA, USA: Academic Press, 2008.
- [11] S. Roy, A. Banerjee, and S. Chaudhury, "Ultrasound image enhancement using deep convolutional neural networks," *IEEE Transactions on Medical Imaging*, vol. 39, no. 5, pp. 1630–1642, May 2020.
- [12] M. Jain, S. Sharma, and R. Gupta, "Real-time ultrasound image enhancement using convolutional neural networks," *Biomedical Signal Processing and Control*, vol. 68, pp. 102697, 2021.